

Tapestry

Premier Program by Pyramid Healthcare

BEHAVIORAL HEALTH TREATMENT IN WESTERN NORTH CAROLINA AND THE POCONO MOUNTAINS OF PENNSYLVANIA

With treatment locations in North Carolina and Pennsylvania Tapestry, offers comprehensive, evidence-based programming for adult women specifically designed to treat mental health, eating disorder, and substance use diagnoses individually or in combination.

Through years of experience, we know that disordered eating and substance use are rarely isolated but are often the result of underlying mental health issues such as trauma, depression and anxiety disorders.



Women-Only Residential Treatment

11 North Country Club Road | Brevard, NC 28712

Nestled in the Blue Ridge mountains of Western North Carolina, Tapestry provides a safe haven for women in search of peace from mental health and/or eating disorders.

Located in Brevard, our six bed, boutique-like women's residential treatment program offers comprehensive therapies, therapeutic modalities and an intrinsically focused approach to help clients address life's challenges and engage with the world in a meaningful way.



Treatment Modalities

- Trauma-Focused
- Relational
- Acceptance & Commitment Therapy (ACT)
- Neuroscience-Based
- Mindfulness-Based
- Holistic Therapies
- Yoga & Meditation
- Clinically Integrated/Mental Health/Co-Occurring Substance Use

Residential Mental Health Treatment for Women

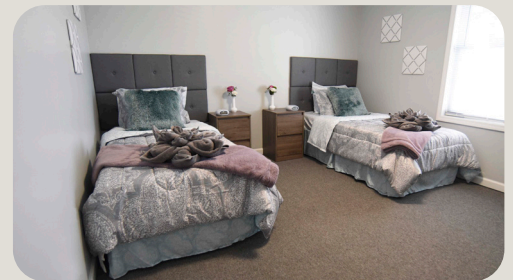
272 Hamlin Highway | Moscow, PA 18444

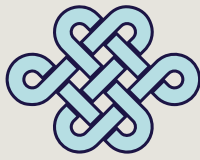
In the beautiful Pocono Mountains of Pennsylvania, Tapestry provides a safe haven for women 18+ in search of peace from primary mental health, secondary substance use and/or eating disorders.

Our 12-bed women's residential mental health treatment program offers comprehensive therapies, therapeutic modalities and an intrinsically-focused approach to help clients address life's challenges and engage with the world in a meaningful way.

Treatment Modalities

- Evidence-Based Approach
- Acceptance & Commitment Therapy (ACT)
- Motivational Interviewing
- Emotion-Focused Family Therapy (EFFT)
- Dialectical Behavior Therapy (DBT)
- Trauma-Informed Care
- Holistic Therapies
- Yoga & Meditation
- Co-Occurring Substance Use or Eating Disorders





Tapestry

Premier Program by Pyramid Healthcare

BEHAVIORAL HEALTH TREATMENT IN WESTERN NORTH CAROLINA AND THE POCONO MOUNTAINS OF PENNSYLVANIA

Adolescent Residential & Outpatient Treatment

5010 Hendersonville Road | Fletcher, NC 28732

Adolescent Residential Treatment

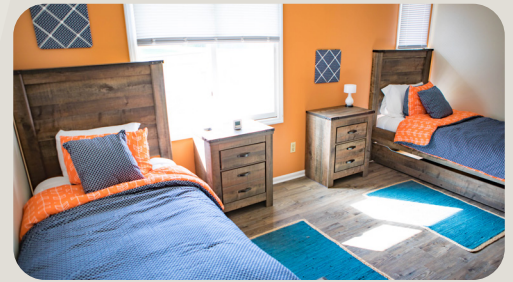
Tapestry's Adolescent Program is a primary mental health and eating disorders residential, Partial Hospitalization (PHP), and Intensive Outpatient (IOP) treatment program for adolescents of all genders, ages 13 to 17. Our clinically integrated, trauma-focused program provides comprehensive treatment services with the goal of intrinsic change and meaningful engagement with the world.

Adolescent Outpatient Treatment

Tapestry offers outpatient treatment at the Partial Hospitalization Program (PHP) and Intensive Outpatient (IOP) levels of care. The treatment schedule includes meal planning, and group lunches.

Our adolescent residential, PHP, & IOP programs include:

- Individual & Family Therapy
- Menu planning, food preparation, and mealtime support
- Art therapy
- Skill building and managing mental health symptoms



Outpatient Treatment for Gender-Identified Adult Women

119 Tunnel Road, Suite G | Asheville, NC 28805

Tapestry's Asheville location offers primary mental health, substance use, and eating disorder Partial Hospitalization (PHP) and Intensive Outpatient (IOP) services for adult women.

Our PHP & IOP day treatment programs include:

- Individual & Family Therapy
- Personal nutrition with a registered dietitian
- Therapeutic groups
- Art therapy
- Menu planning, food preparation, and mealtime support
- Dietitian-supported grocery shopping and restaurant dining
- Equine therapy - available as individual therapy sessions

Tapestry is in-network with most major insurance providers and a proud member of the Veterans Affairs Community Care Network (VA-CCN).